



President's Message...

2009 is shaping up to be a great year for UCLA Prytanean Alumnae! We started off with a fantastic Games Day hosted by the ladies of the 1960s and 1970s, and now we're looking forward to a fun-filled Spring Scholar Benefit. Raising scholarship money is our key mission, and I hope that everyone will make every effort to support UCLA and our scholars. Soon we'll be electing a new slate of officers and welcoming new members to our organization. We look forward to seeing all of you at our upcoming events!

~ Kathy Lisiewicz, President



Saturday, April 25, 2009

11:00 a.m. - 3:00 p.m.

"Aloha Blue and Gold" Annual Spring Scholar Benefit

Bring your Bruin

"Uhane and Pili'alohe"

(spirit and friendship)

*and join Prytanean to support
outstanding UCLA Scholars!*

Manhattan Country Club
1330 Park View Avenue
(Rosecrans and Village Drive)
Manhattan Beach
(310) 546-5656

\$75 per person

R.S.V.P. by April 15, 2009

and

"Come dressed in your aloha spirit!"

11:00 a.m.-1:00 p.m. Silent Auction

12:00 p.m.-3:00 p.m. Luncheon and Entertainment

..... Silent Auction & Drawing

Winners Announced

~All net proceeds will support scholarships awarded by The UCLA
Prytanean Alumnae Association~

Inquiries: Tami Brothers



An Important Reminder Regarding Your Scholar Benefit Obligation

Active members are responsible for the purchase or sale of two benefit tickets or the equivalent dollar value in Raffle Tickets or any combination of Benefit/Raffle tickets.

Provisional and Contributing members are responsible for the purchase or sale of one ticket or the equivalent dollar value in Raffle Tickets or any combination of Benefit/Raffle tickets.

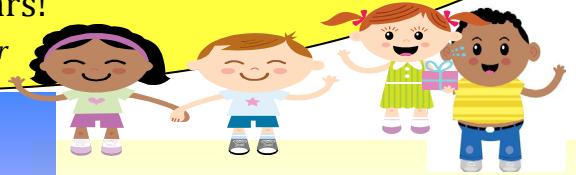
~(Each Benefit Ticket is \$75.00 & Each
Raffle Ticket is \$2.00 or six for \$10.00)~



WE NEED YOU!

This year -- more so than ever -- each and every one of us is essential to the success of our Annual Scholar Benefit. If everyone can secure just ONE donation for the auction, we can secure Prytanean scholarship funds to help give more future Bruins the opportunity of a great education. So, ask *everyone* to donate! Your hair stylist who might donate a haircut, your manicurist, a local restaurant, a local movie theater -- ask everyone. It promotes the donor and Prytanean raises money for scholars!

~Gloria Ko - Benefit Donations Chair



SCHOLAR BENEFIT DONATION ITEMS. . .

If you are securing donations for the benefit's Silent Auction or Drawing you must turn in your items in advance.

Please contact **Gloria Ko** if you have any questions or need to coordinate pick-up or delivery prior to the Benefit.

The deadline for donations is **April 22.**

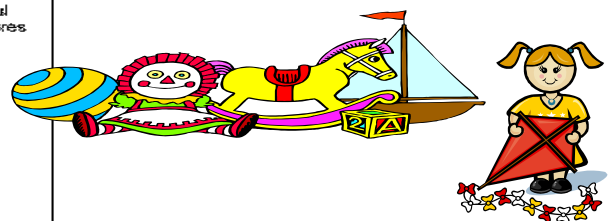
Thank You!

WHAT WE DO MATTERS!

As reported in the March 2009 Prytanean Newsletter this past December 13th Julia Waterman and Paula Schulman Co-Chaired the Annual UCLA Bear Bag Holiday Party and it was a tremendous success thanks to their efforts.

Bear Bags is a project near and dear to many Prytanean hearts because we get to bring a little joy to the children at **Mattel Children's Hospital at UCLA** during the holiday season.

Thanks to the work and generosity of Prytaneans over \$2000.00 of donations were contributed, 200+ bags were decorated, filled with toys and delivered to the kids. The bags are both needed and appreciated as evidenced by the "Thank You" (left) letter Julia received from the hospital and it is really nice to hear that we are making a real difference. ~



Mattel Childrens Hospital UCLA

Child Life/Child Development Services
757 Westwood Boulevard, Room 5236
Los Angeles, CA 90095
(310) 267-9440 Fax (310) 267-3553

January 8, 2009

UCLA Prytanean Alumnae Association
5118 Babette Avenue
Los Angeles, CA 90066

Dear UCLA Prytanean Alumnae Association:

Annually your organization donates gift bags for the pediatric patients that are wonderful. Your personalization to each bag demonstrates the passion each one of you have for what you are doing. This years donation amounting to \$2,000.00 will be used as activities to support children's coping during inpatient hospitalizations. Play is the work of children and your generosity provides a means by which the entire family may share in the joy of play and expressive arts therapies, forgetting, for a moment, that they are in a medical center.

Hospitals can be a confusing and frightening environment for a child. Elizabeth is a 14-year old patient who endures lengthy hospitalizations resulting from cancer treatment. She found art to be an important outlet, sharing that painting and scrap booking are her "fun activities" during lengthy admissions. Luis is a 4-year old patient who grew up in the intensive care unit, spending the first two years of his life in the hospital. He endures lengthy admissions and separation from his older brothers and extended family, experiencing fresh air for the first time after his 1st birthday. Child Life Child Development Services at Mattel Children's Hospital UCLA seeks to mitigate fears associated with hospitalization, supporting the whole family, by familiarizing young children, adolescents, and their siblings with the healthcare environment.

Mattel Children's Hospital UCLA established Child Life Child Development Services in 1968 in recognition of the unique needs of pediatric patients, especially those who are critically or chronically ill. Child Life Specialists address the social, emotional and developmental needs of hospitalized children, communicating accurate and age specific information, identifying potential stressors, as well as planning and practicing coping strategies. Child Life Specialists recognize developmental issues related to illness, support coping strategies to mitigate fears, and concerns through education, behavior management and adaptive role play. Therapeutic intervention, play, non-pharmacological pain management techniques, and educational programs are individualized through developmental observations, providing children with the opportunity to foster positive coping skills, master stressful life events, separation, isolation, and the potentially traumatic realities of intrusive medical procedures and illness.

Thank you again for your care and support of children and families at Mattel Children's Hospital UCLA.

Sincerely,

Maria Dalessandro
Maria Dalessandro
Administrative Assistant
Child Life/Child Development

GAME DAY

January 24 at the home of Judy Stein

Hosted by Prytanean Members representing the 1960s/1970s decades at UCLA.

“Apples to Apples” proved to be the new favorite as competitive Prytaneans gathered at Judy Stein’s home on January 24 for Game Day. Armed with popcorn, trail mix, and other assorted snacks, players tried to match “Descriptions” with unusual “Things” and ended up in stitches! The time flew by, but there was also enough time to fit in a quick round of “Celebrity Taboo” before the afternoon ended.

~Karen King -Co-Chair



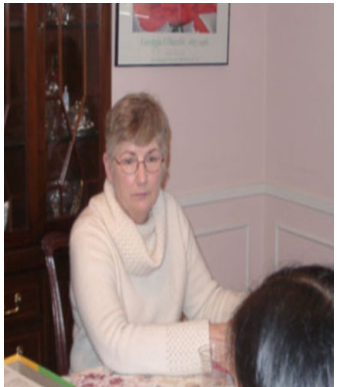
Clockwise from front left: Loretta Elliott, Kathy Lisiewicz, Susan Olson, Karen King, Judy Stein, Julie Ohara



Left to right: Julie Ohara, Aoibheann Clarke-Wieclawek & Michelle Escovar



Loretta Elliot



Susan Olson



Left to right: Julie Ohara, Michelle Escovar, Aoibheann Clarke-Wieclawek



Kathy Lisiewicz



Karen King, Judy Stein, Julie Ohara

Leon Strauss Foundation Provides Generous Donation

Prytanean gratefully acknowledges the generous \$3,500 contribution to our scholarship fund by the Leon Strauss Foundation.

For many years, the Foundation has supported Prytanean’s mission to provide scholarships for deserving UCLA students. This donation will be designated as the UCLA Prytanean/Leon Strauss Foundation Scholarship.

Our deepest thanks go to Bill and Deanne Simon for helping to make this contribution possible!





MEMBER NEWS

In Memoriam



Honorary Prytanean member **Ethel Irish Coplen** passed away at her home in Irvine, CA . She became a member of Prytanean in 1951 and graduated from UCLA in 1932. She was a loyal Bruin, served as Vice President of the Alumni Association and a member of Pioneer Bruins. Her obituary in the February 3 LA Times read: "Mrs. Coplen forged successive and successful careers as a vaudeville headliner, business owner, travel professional, philanthropic leader, senior activist, mother, grandmother and great grandmother." Ethel was 102.



Membership applications and sponsor recommendation forms are due on April 20th.

Newsletter Information

The complete online newsletter can be accessed directly at <http://groups.yahoo.com/group/uclaprytanean/> or by going to the main Prytanean website at <http://www.uclaprytanean.org> and choosing the *Yahoo Group* link.

To view the newsletter online *without* detailed information for events and "Roster Updates" (i.e. specific personal information) go to <http://www.uclaprytanean.org>.

Roster Updates

Rose Gorlekian

We love to hear your news! Please send any and all news to Aoi bheann Clarke-Wieclawek at Midge150@aol.com or to 441 Bob Hope Drive, Toluca Lake, CA 91505

Happy  St. Patricks Day

Put Another Candle On The Birthday Cake.....

Happy Birthjaj



February		April	
Kathy Lisiewicz	06	Sandy Hubert	03
Diana Chen	14	Audrey Kapp	04
Linda Beisswanger	15	Katy Young	05
Isabel Wintraub	19	Carolyn Zucker	10
Lori Basch	20	Judy Levin	10
		Michelle Boontanom	15
		Valerie Nelson	17
March		Anne Gray	20
Sue Rickman	09	Barbara Robins	23
Kristine Young	12	Mary Miller	25
Louisa Cardenas	16	Michelle Escovar	25
Carolyn Godlewski	22	Karen Olson	29
Kelly Winters	27	Sylvia Guillory	30
Mary Ellen Davis	28		
Wilma Brown	29		

